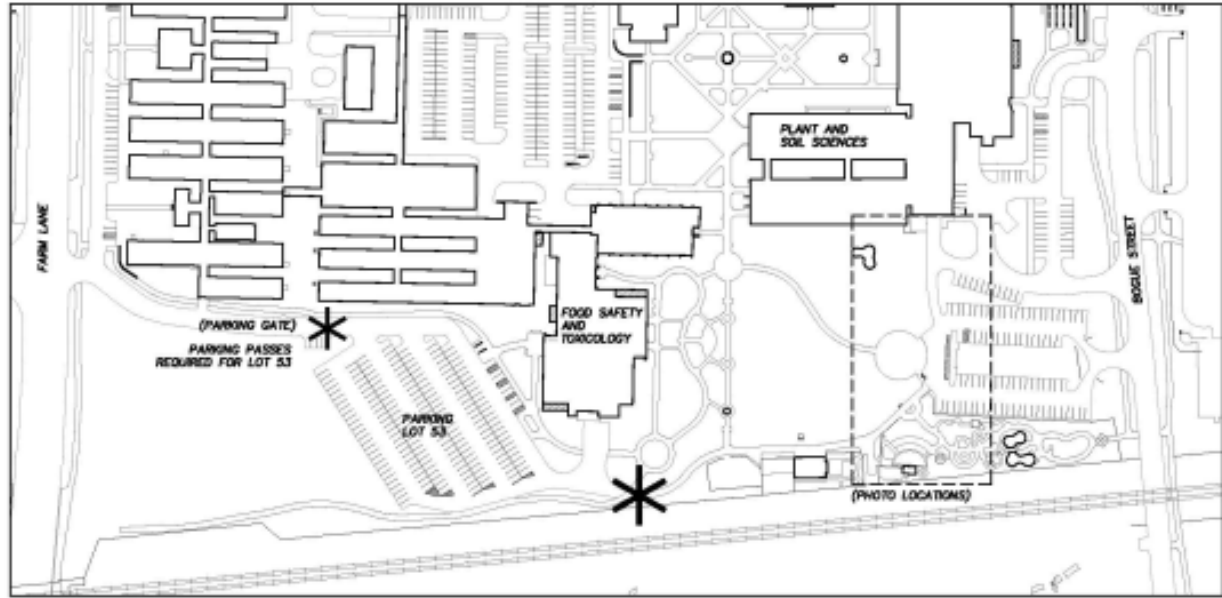




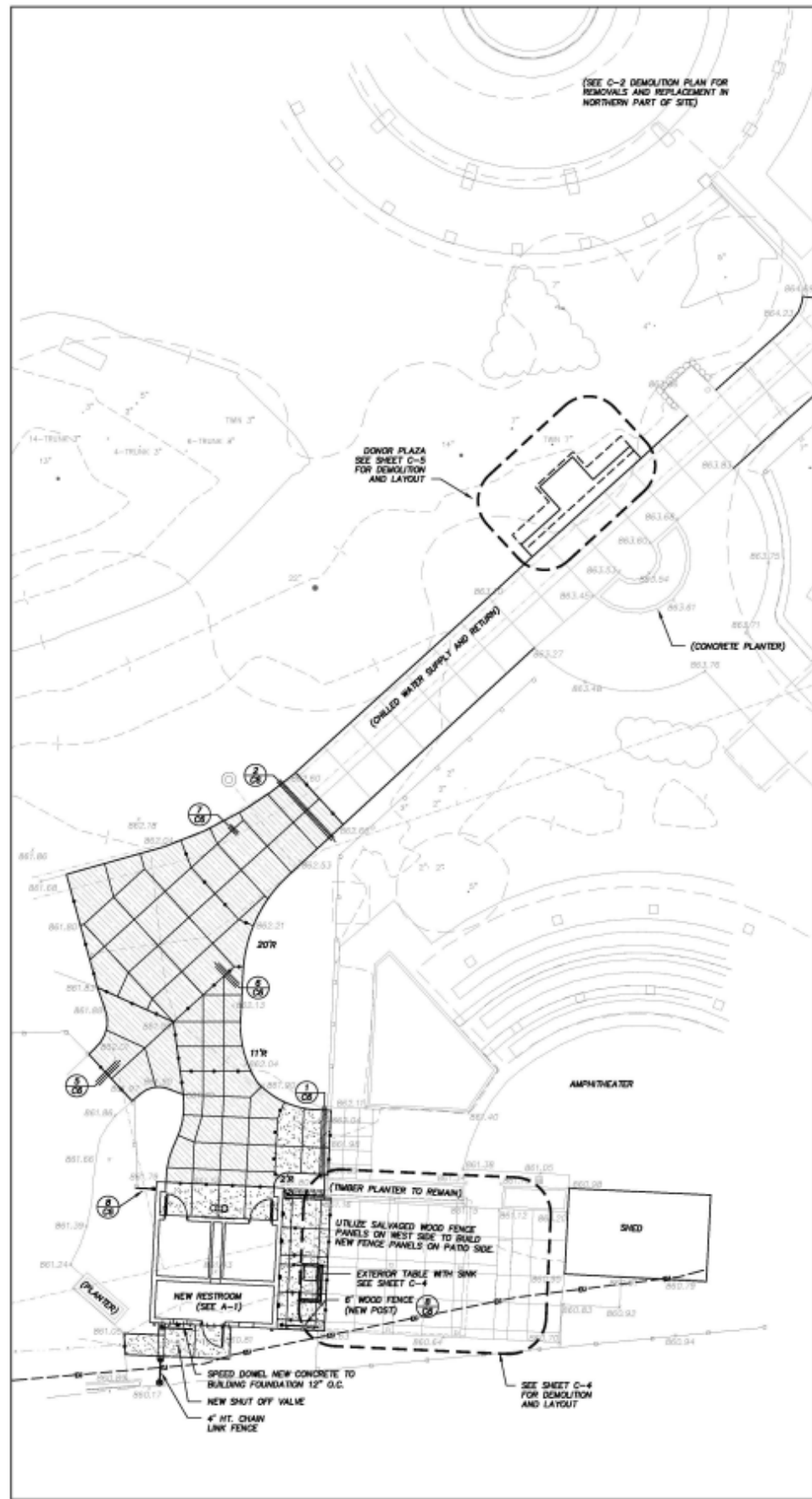
SHEET INDEX

1	G-1	TITLE SHEET
2	C-1	LAYOUT
3	C-2	UTILITY
4	S-1	FOUNDATION PLAN
5	A-1	FLOOR PLAN
6	A-2	REFLECTED CEILING PLAN
7	A-3	ELEVATIONS
8	A-4	SECTIONS/DETAILS
9	M-1	MECHANICAL PLANS
10	M-2	MECHANICAL DETAILS
11	P-1	PLUMBING PLAN
12	P-2	VENTING PLAN
13	P-3	PLUMBING DETAILS
14	E-1	ELECTRICAL PLAN
15	E-2	LIGHTING PLAN

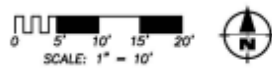


LOCATION MAP

CAPITAL PROJ. NO. GP4138	
LEAD	KERRY
ARCH	KARORFNP
MECH	HOPPER
ELEC	BEACH
CIVIL	LEFEVRE
L.A.	KERRY
REP.	COOL
APPR.	LEFEVRE
DATE	8/20/15
SCALE	N/A
REVISIONS	
RELEASED FOR BID	

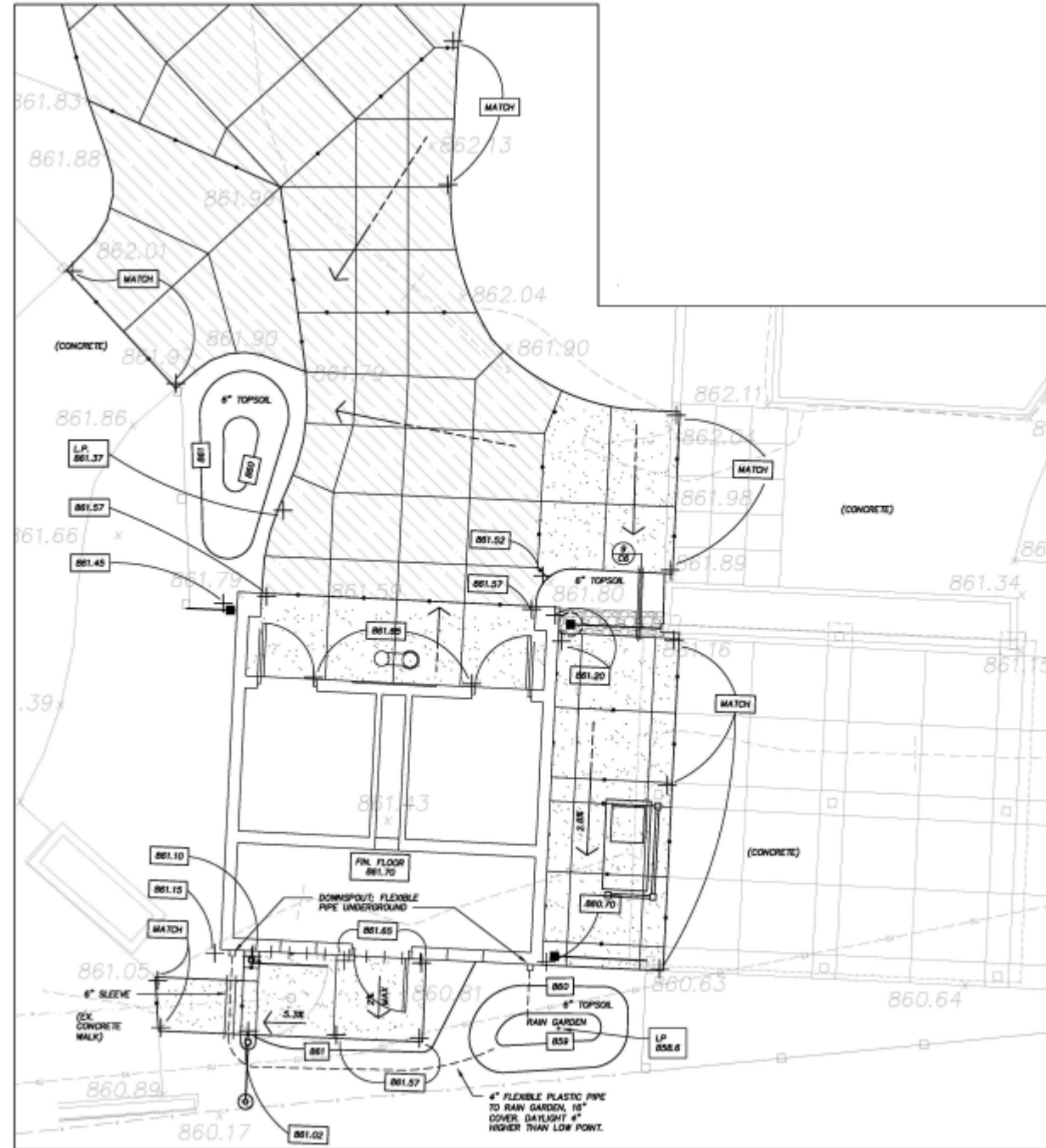


LAYOUT PLAN

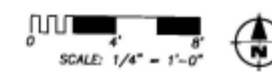


LAYOUT LEGEND:

- PROPOSED 6" CONCRETE SIDEWALK (SECTION 1/C-6)
- PROPOSED 6" REINFORCED CONCRETE (SECTION 2/C-6)
- PROPOSED CURB AND GUTTER
- EXPANSION JOINT $\frac{6}{12}$
- EXPANSION JOINT ALONG BUILDING
- DETAIL SHEET
- EXISTING CATCH BASIN

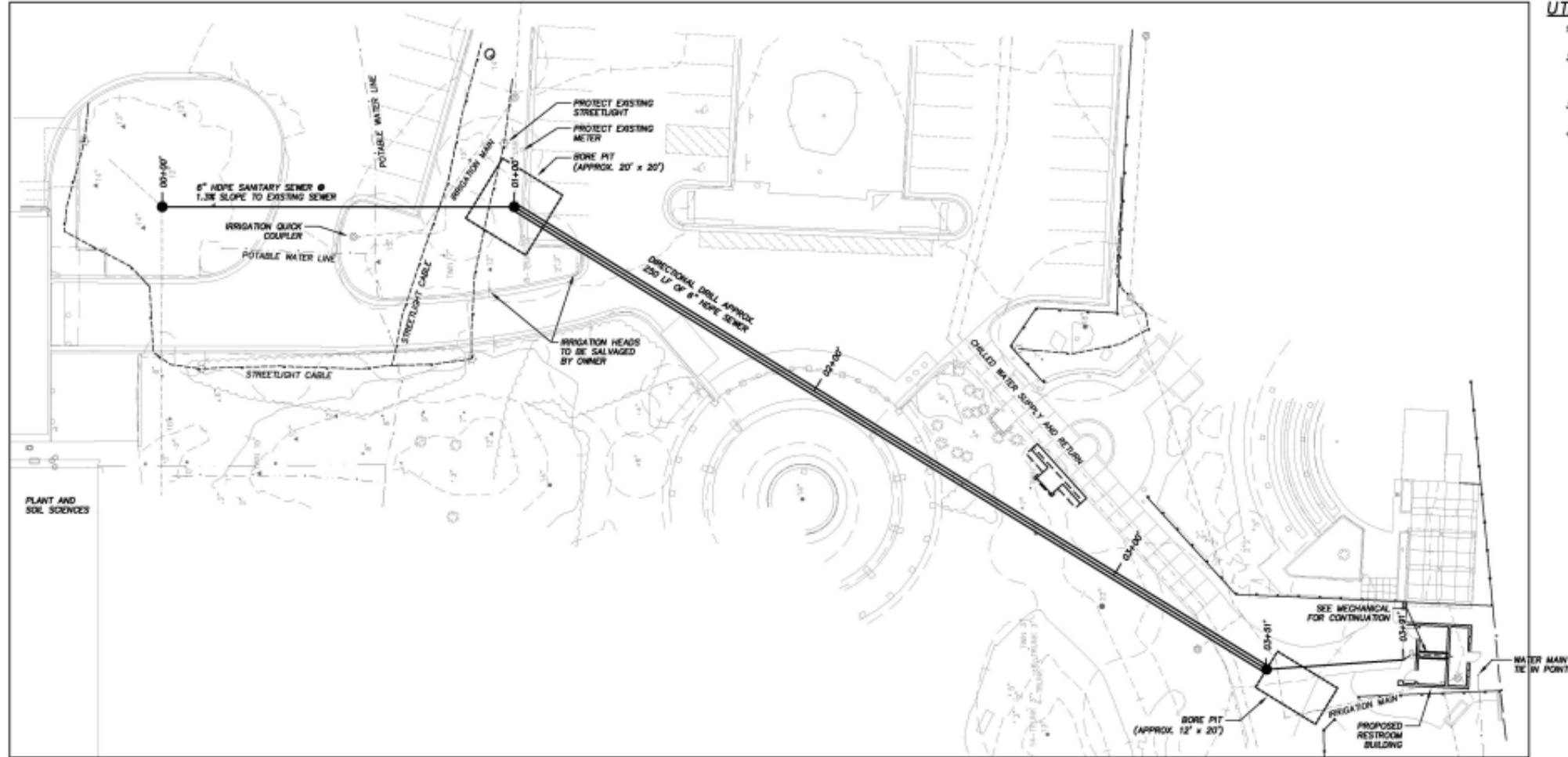


LAYOUT ENLARGEMENT AND GRADING PLAN

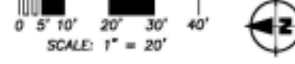


**CHILDREN'S GARDEN - RESTROOM
 CONSTRUCT ORIGINAL BUILDING**

CAPITAL PROJ. NO.	CP14136
LEAD	KIMNEY
ARCH	KARDOFF
MECH	JORDAN
ELEC.	BEACH
CIVIL	LEWIS
L.A.	KIMNEY
REP.	COOL
APPR.	LEWIS
DATE	8/20/15
SCALE	AS SHOWN
REVISIONS	
RELEASED FOR BIDDING	

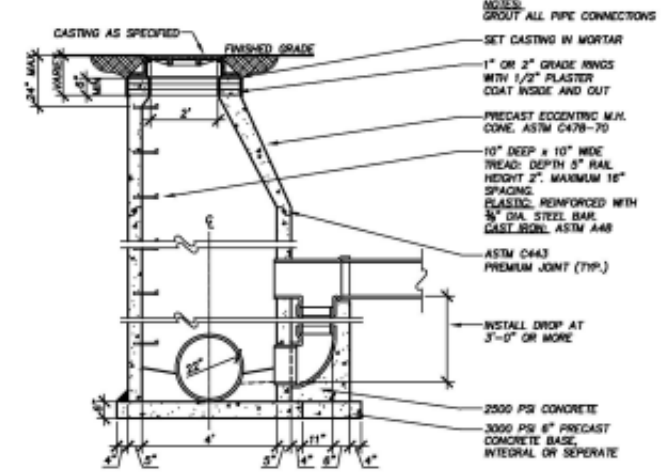
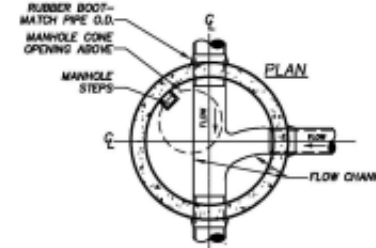


UTILITY PLAN

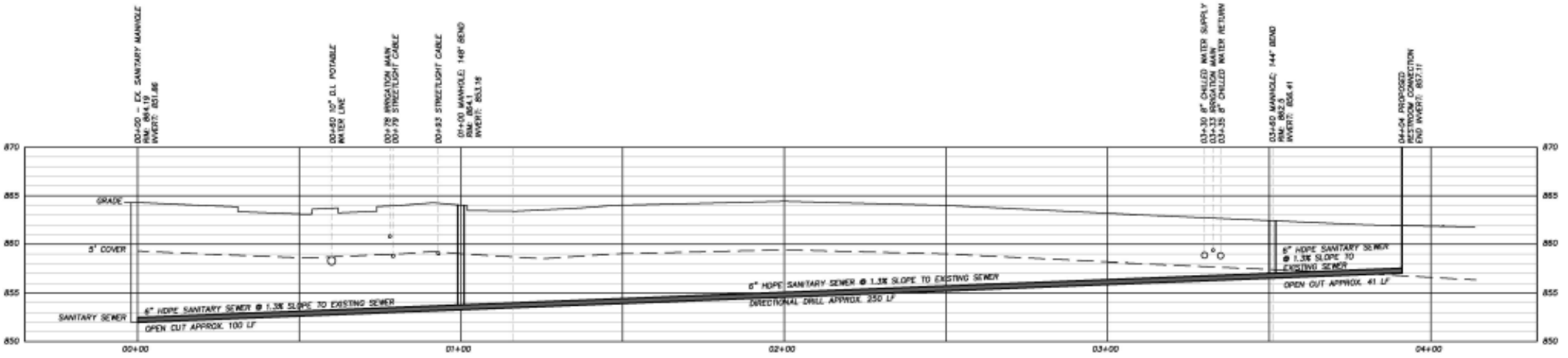


UTILITY NOTES:

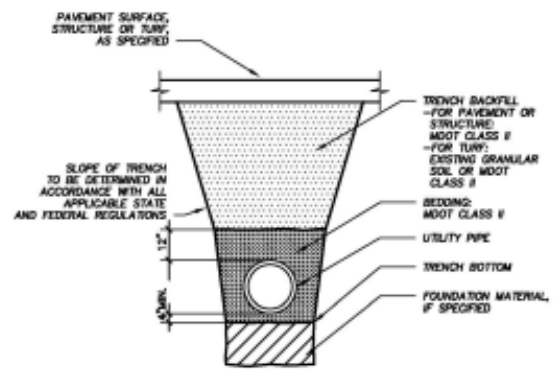
1. PERFORM FIELD VERIFICATION PRIOR TO BEGINNING SEWER CONSTRUCTION FOR EXACT ELEVATIONS OF EXISTING UTILITIES AS SHOWN ON THE DRAWINGS.
2. LOCATIONS AND ELEVATIONS OF EXISTING UTILITIES ARE NOT EXACT. CONTACT MISS DIG AT 1-800-482-7171 AND MSU PHYSICAL PLANT PRIOR TO BEGINNING STORM SEWER CONSTRUCTION.
3. EXISTING UTILITIES DESTROYED OR DISTURBED BY THE CONTRACTOR'S CONSTRUCTION OPERATIONS SHALL BE REPAIRED AT NO ADDITIONAL COST TO THE OWNER.
4. GRADE FOR RM ELEVATIONS ARE APPROXIMATE. FINAL ADJUSTMENT SHALL BE THE RESPONSIBILITY OF THE CONTRACTOR.



1 SANITARY MANHOLE WITH DROP CONNECTION
SCALE: 3/8"=1'-0"



UTILITY PROFILE

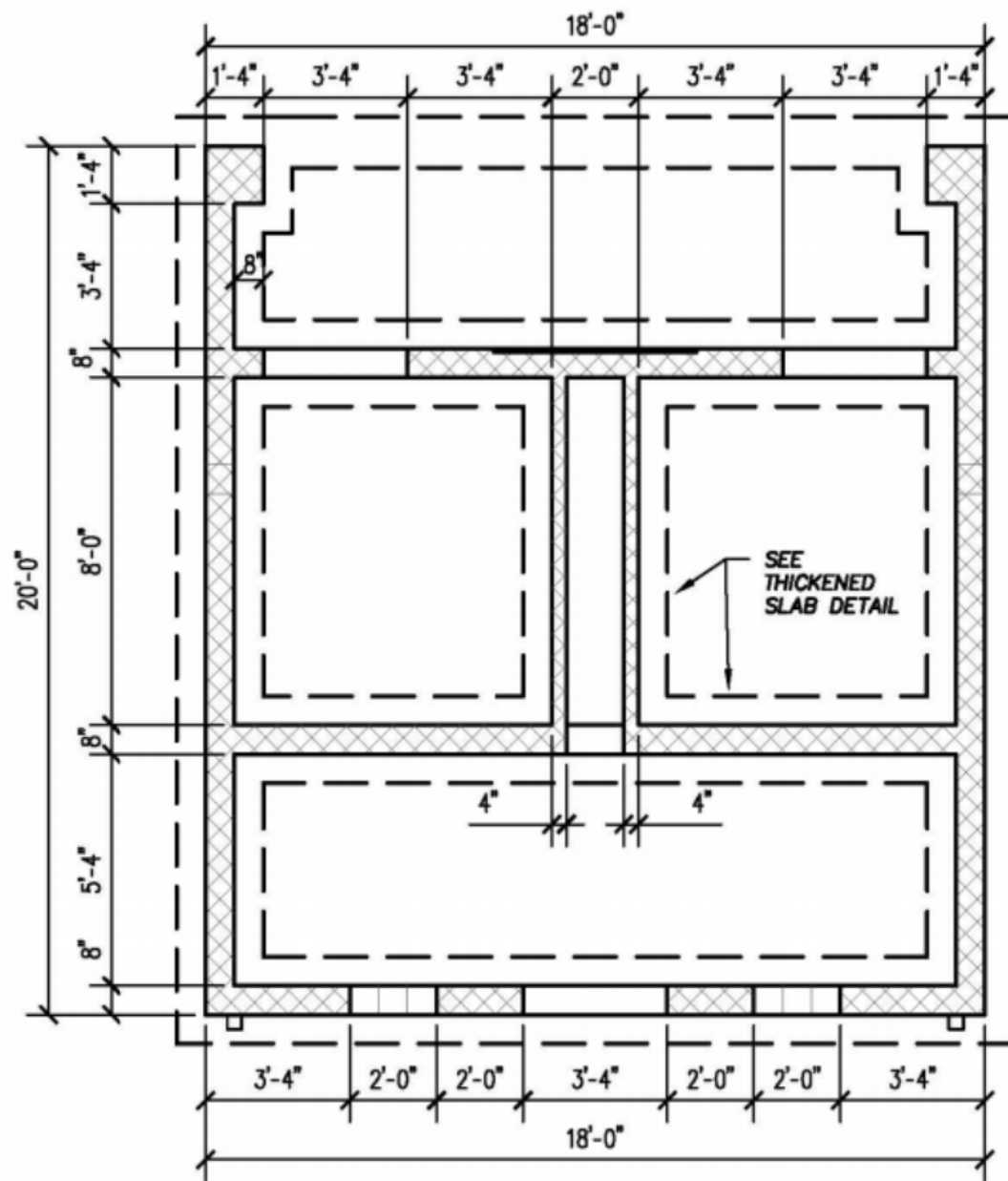


2 UTILITY TRENCH
NO SCALE

NOTE: BACKFILL COMPACTED: BOX MODIFIED PROCTOR UNDER PAVEMENT BOX MODIFIED PROCTOR UNDER TURF

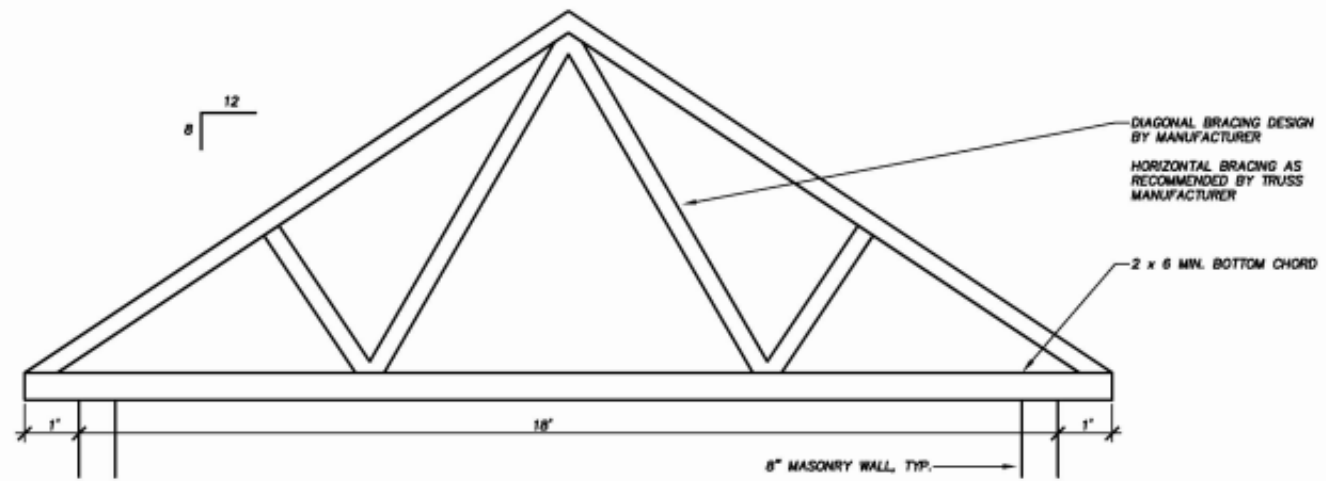
CAPITAL PROJ. NO. 0214130

LEAD	KENNEY
ARCH	KARSDORFF
MECH	HOPPER
ELEC	BENCH
CIVIL	LEFEBURE
L.A.	KENNEY
REP.	COOL
APPR.	LEFEBURE
DATE	8/20/13
SCALE	VARIED
REVISIONS	
RELEASED FOR BID	



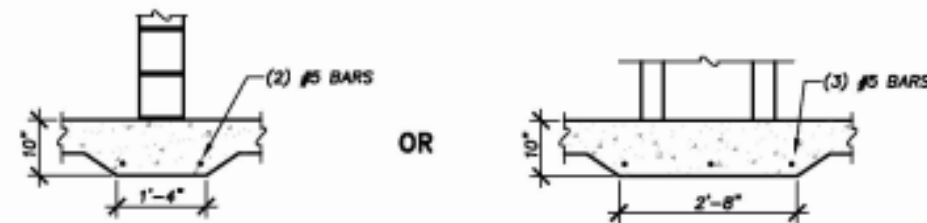
FOUNDATION PLAN

SCALE: 1/4"=1'-0"



TRUSS DIAGRAM

SCALE: 1/2"=1'-0"

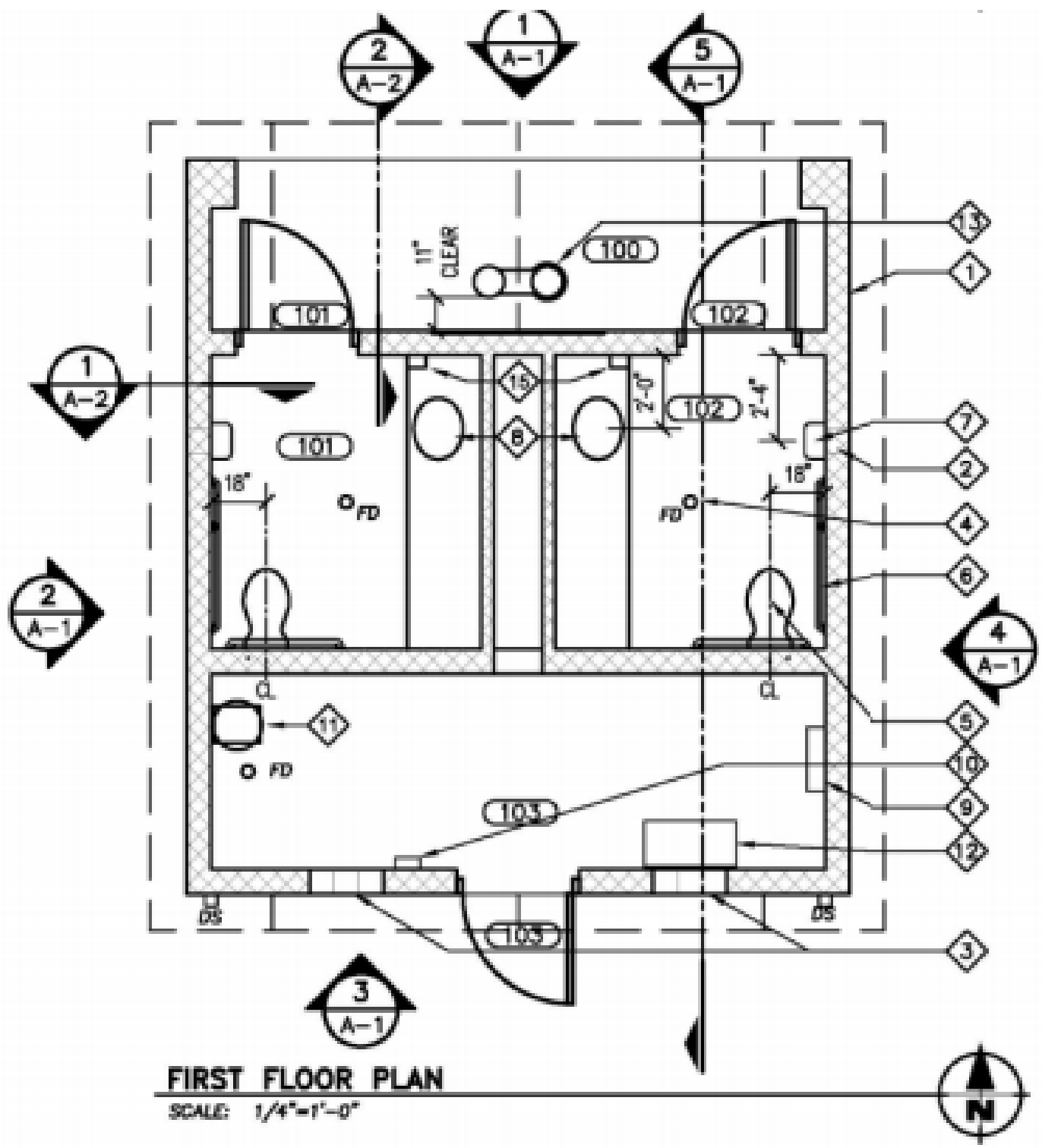


THICKENED SLAB

SCALE: 1/2"=1'-0"

CAPITAL PROJ. NO.
074430

LEAD	DESIGN
ARCH.	FOUNDATION
MECH.	DOOR
ELEC.	BRACK
CIVIL	LANDSCAPE
L.A.	DESIGN
REP.	COOL
APPR.	LANDSCAPE
DATE	DATE
SCALE	SCALE
REVISIONS	
RELEASED FOR	



FIRST FLOOR PLAN
SCALE: 1/4"=1'-0"

ARCHITECTURAL PLAN NOTES:

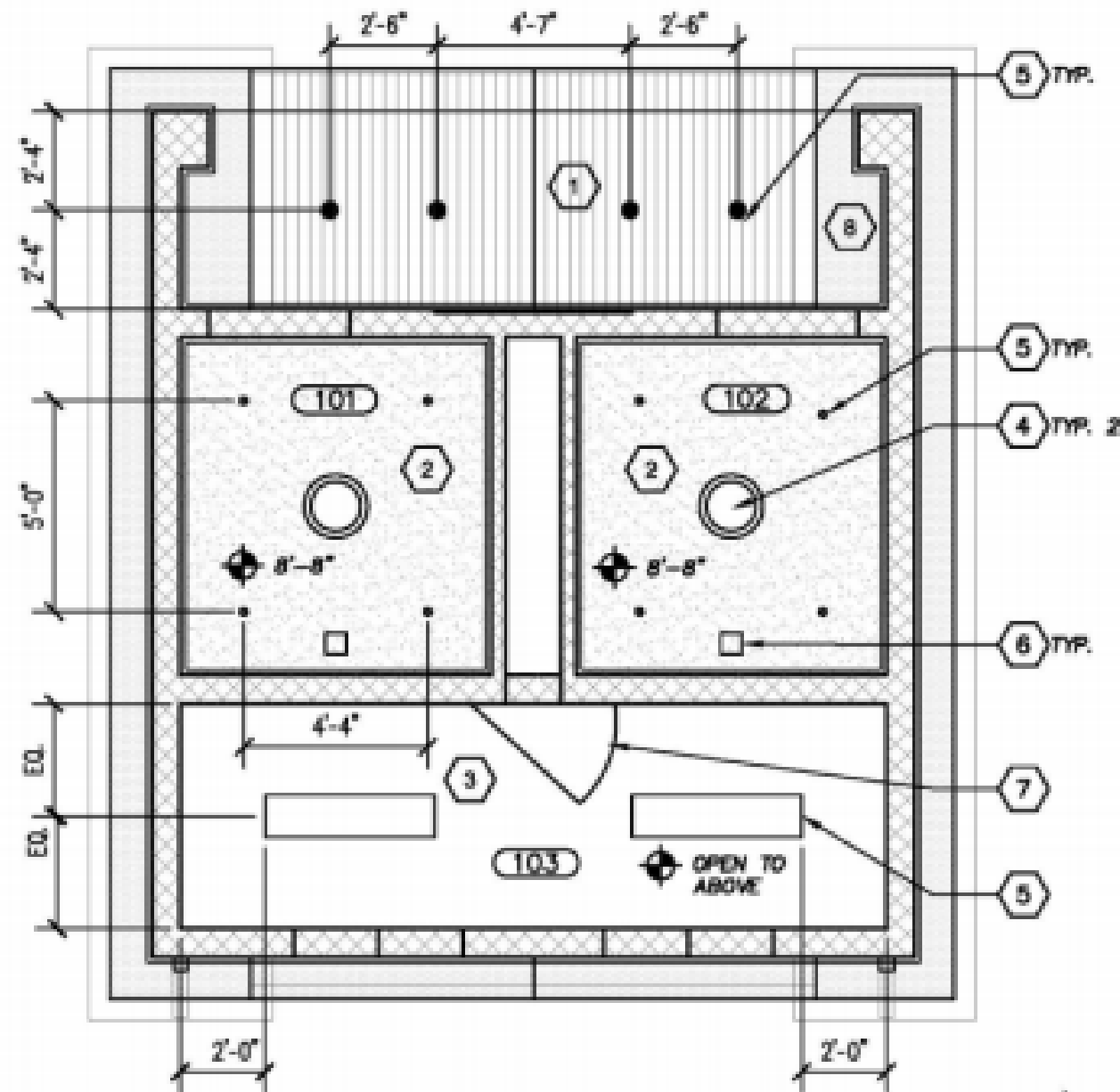
- 1 8" CMU TYP.
- 2 8"x8" VANDALPROOF VENT "C/S ARCHITECTURAL LOUVERS BY CONSTRUCTION SPECIALISTS", 8" DEEP WITH INTEGRAL SCREEN. OWNER TO SELECT KYNAR OR POWDERCOAT COLOR. SEE ELEVATIONS (2 LOCATIONS).
- 3 4" x 8" x 8" GLASS BLOCK, SEE ELEVATIONS. SLOPED MASONRY SILL AT INTERIOR SIDE.
- 4 FLOOR DRAIN TYP. (3 LOCATIONS) - SEE MECHANICAL.
- 5 ACCESSIBLE TOILET WITH AUTOMATIC FLUSH - SEE MECHANICAL.
- 6 ACCESSIBLE GRAB BARS, TYP.
- 7 ELECTRIC HAND DRYER (TYP.) MOUNT AT 44" TO OPERABLE HEIGHT. SEE ELECTRICAL.
- 8 1 PIECE SOLID SURFACE COUNTERTOP WITH INTEGRAL ADA COMPLIANT BOWL, BACKSPLASH, AND APRON. OWNER TO SELECT COLOR. SEE MECHANICAL.
- 9 ELECTRICAL PANEL, SEE ELECTRICAL.
- 10 CONTROL PANEL FOR CONTROLLED ACCESS DOORS. SEE ELECTRICAL.
- 11 HOT WATER HEATER ON RAISED SHELF; SEE MECHANICAL.
- 12 10" x 24" ADJUSTABLE STAINLESS STEEL SHELF WITH 1" ROLLED EDGE ON HEAVY DUTY STAINLESS STEEL.... K&V BRACKETS. TOP BRACKET @ 36" AFF, BOTTOM AT 12" AFF.
- 13 DRINKING FOUNTAIN, SEE MECHANICAL.
- 14 2" RELIEF (6" BLOCK) FOR TILE INSET BY OTHERS. SEE ELEVATION FOR SIZE/LOCATION.
- 15 SOAP DISPENSER - OWNER PROVIDED, CONTRACTOR INSTALLED. MOUNT 44" HEIGHT TO OPERABLE BUTTON OF DISPENSER.

DOORS 101 & 102
3' x 7' GALVANIZED STEEL DOOR (FACTORY PRIMED AND PAINTED - OWNER TO SELECT CUSTOM COLOR) WITH ELECTRIC TRANSFER HINGE AND ELECTRIC LATCH. THUMBTURN INTERIOR LOCKING BOLT AND CLOSER. KICKPLATE ON DOOR INTERIORS. PROVIDE CONDUIT ROUTE TO CONTROLLER FOR TIMED AUTO-LOCKING AND UNLOCKING. LOW VOLTAGE WIRING BY OWNER.

DOOR 103
3' x 7' GALVANIZED STEEL DOOR (FACTORY PRIMED AND PAINTED- OWNER TO SELECT CUSTOM COLOR) 1/2" PR HINGES. LEVER STORAGE LOCKSET. HOLD OPEN CLOSER. KICK PLATE BOTH SIDES.

FINISH KEY				
	FLOOR	WALL	CEILING	COMMENTS
100	CONC.	GROUND FACE CMU*	PAINTED WOOD**	*SEE ELEVATION **MATCH FASCIA COLOR
101	MMA*	GROUND FACE CMU**	PAINTED PLASTER, WHITE EPOXY	*WITH 4" INTEGRAL BASE OWNER TO SELECT COLOR/FLAKE **SEE ELEVATIONS
102	MMA*	GROUND FACE CMU**	PAINTED PLASTER, WHITE EPOXY	*WITH 4" INTEGRAL BASE OWNER TO SELECT COLOR/FLAKE **SEE ELEVATIONS
103	SEALED CONC.	GROUND FACE CMU*	OPEN TO DECK	

CAPITAL PROJ. NO.	DP14136
LEAD	EMERY
ARCH	KABORRNP
MECH	HODDJK
ELEC	BEADL
CIVIL	LEEVRE
L.A.	EMERY
REP.	COOL
APPR.	LAYVRE
DATE	EMRY15
SCALE	VARIED
REVISIONS	
RELEASED FOR RD	



REFLECTED CEILING PLAN

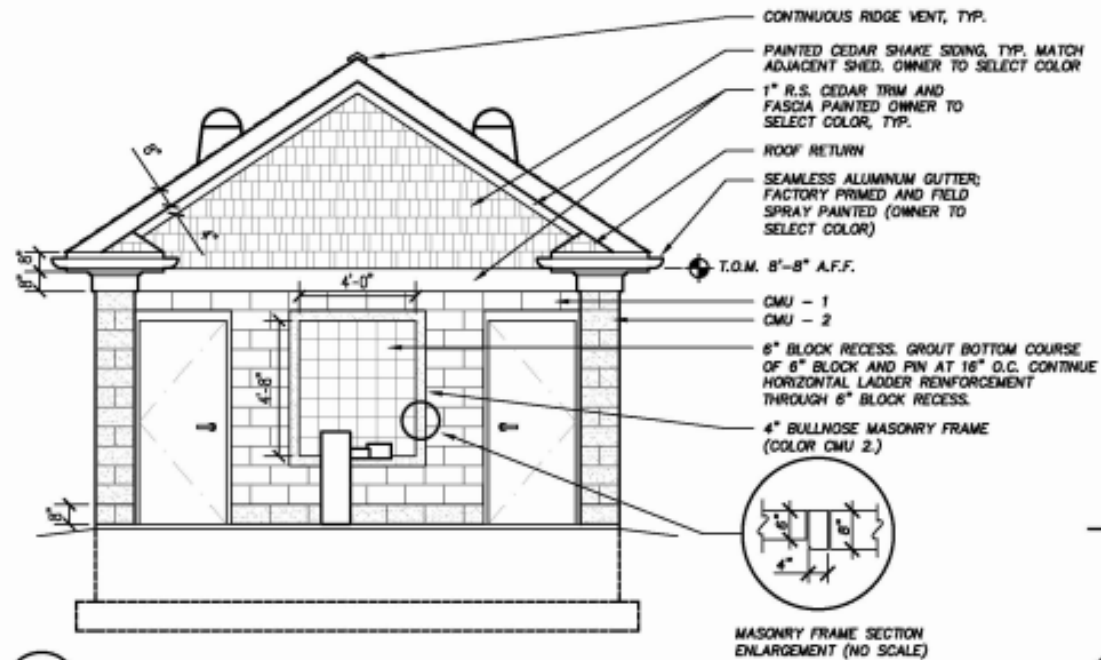
SCALE: 1/4"=1'-0"

ARCHITECTURAL REFLECTED CEILING PLAN NOTES:

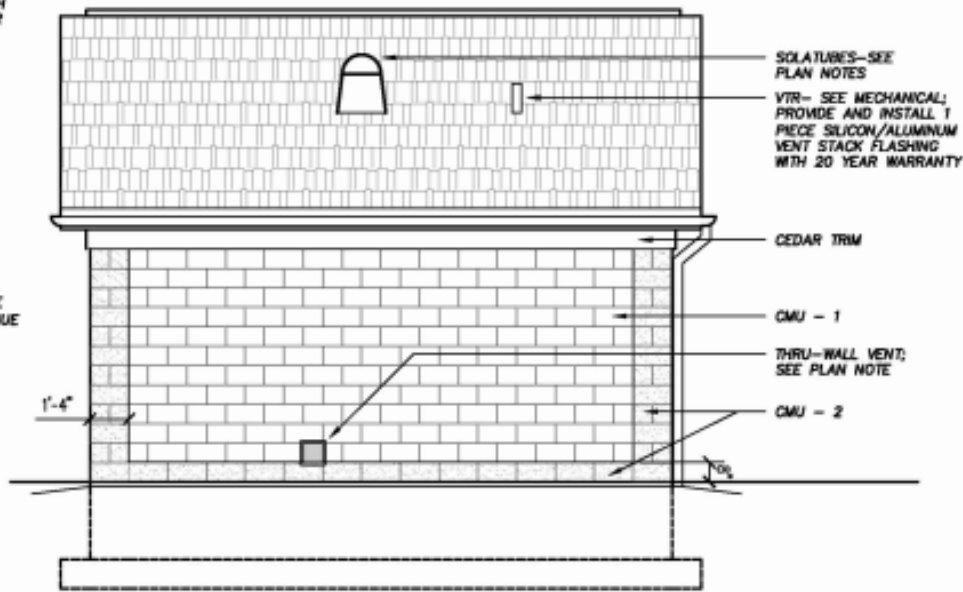
- 1 PAINTED WOOD (6" T & G CEDAR) SOFFIT.
- 2 THIN COAT PLASTER ON GYPSUM LATH.
- 3 OPEN TO ABOVE
- 4 SOLATUBE: 14" SOLATUBE MODEL 290DS WITH CLASSIC OPTIVIEW DIFFUSER, SEVERE CLIMATE GLAZING, NATURAL EFFECT LENS, DOME SHOCK INNER, PITCHED FLASHING AND 4" BLACK TURRET EXTENSION. CENTER IN ROOM. INSTALL SOLATUBE AND FLASHING PER MANUFACTURER'S RECOMMENDATIONS. (TYP. 2)
- 5 LIGHT FIXTURE - SEE ELECTRICAL.
- 6 EXHAUST VENT, TYP. 2 - SEE MECHANICAL.
- 7 ATTIC ACCESS PANEL AND DOOR. SEE SECTION.
- 8 R.S. CEDAR SOFFIT - SEE WALL SECTION SECTION

CAPITAL PROJ. NO.
071413

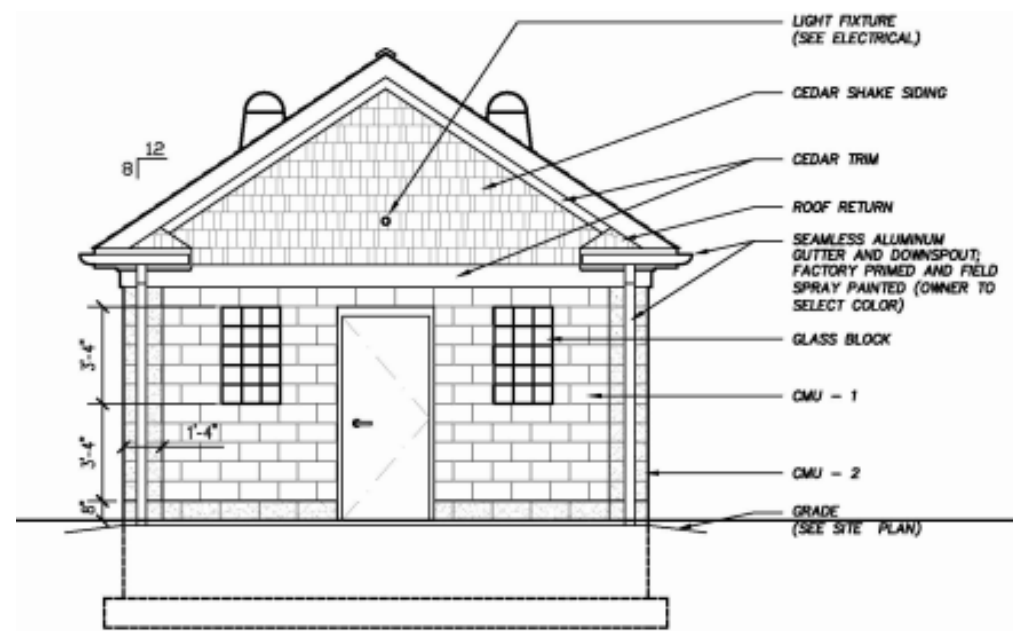
LEAD	KRBEY
ARCH	KASORRNP
MECH	JOSISS
ELEC	REACH
CIVIL	LEFFUSE
L.A.	KRBEY
REP	COOL
APPR	LEFFUSE
DATE	8/20/15
SCALE	VARIO
REVISIONS	
RELEASED FOR BID	



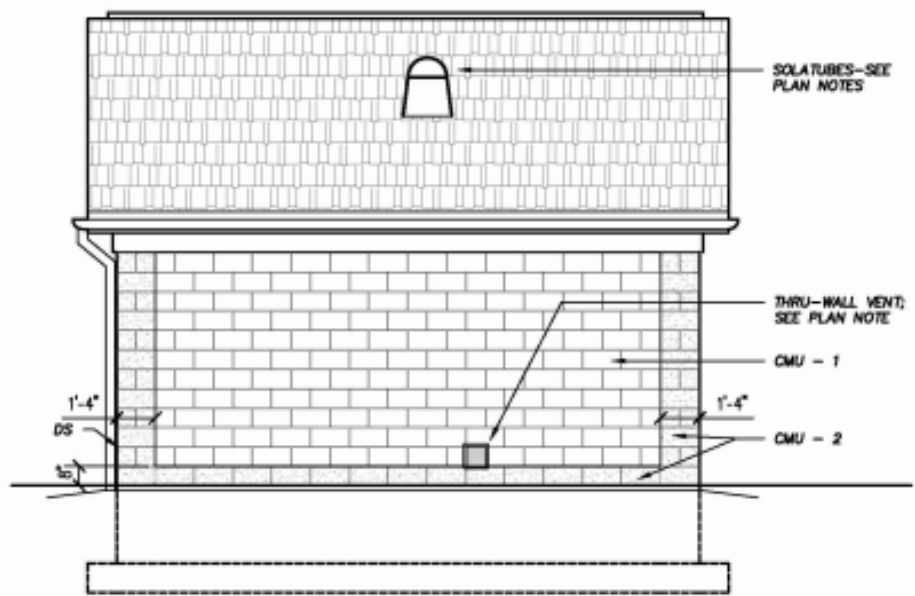
1 NORTH ELEVATION
A-1 SCALE: 1/4"=1'-0"



2 WEST ELEVATION
A-1 SCALE: 1/4"=1'-0" (SEE ELEVATION 1 FOR TYPICALS)



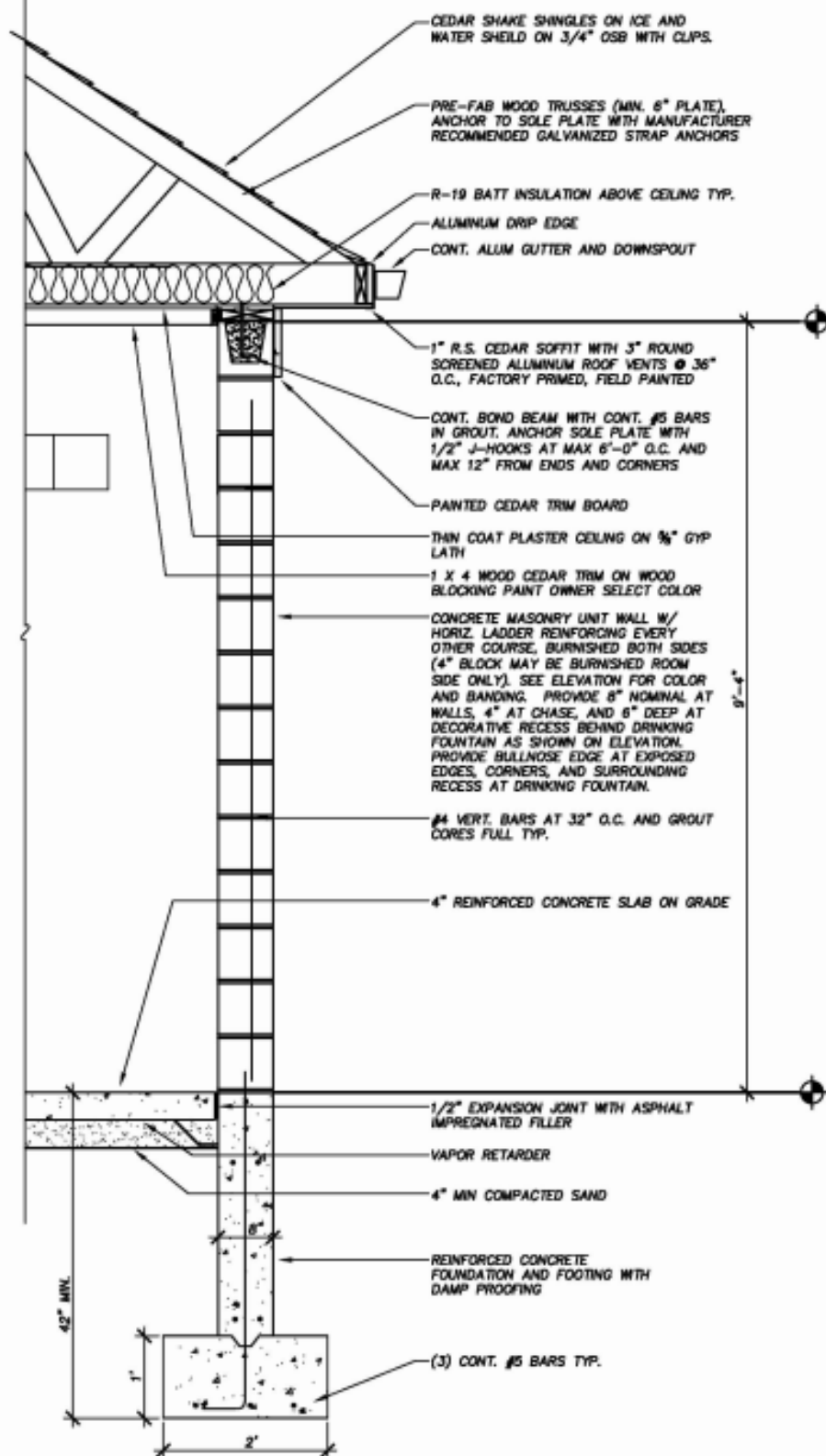
3 SOUTH ELEVATION
A-1 SCALE: 1/4"=1'-0" (SEE ELEVATION 1 FOR TYPICALS)



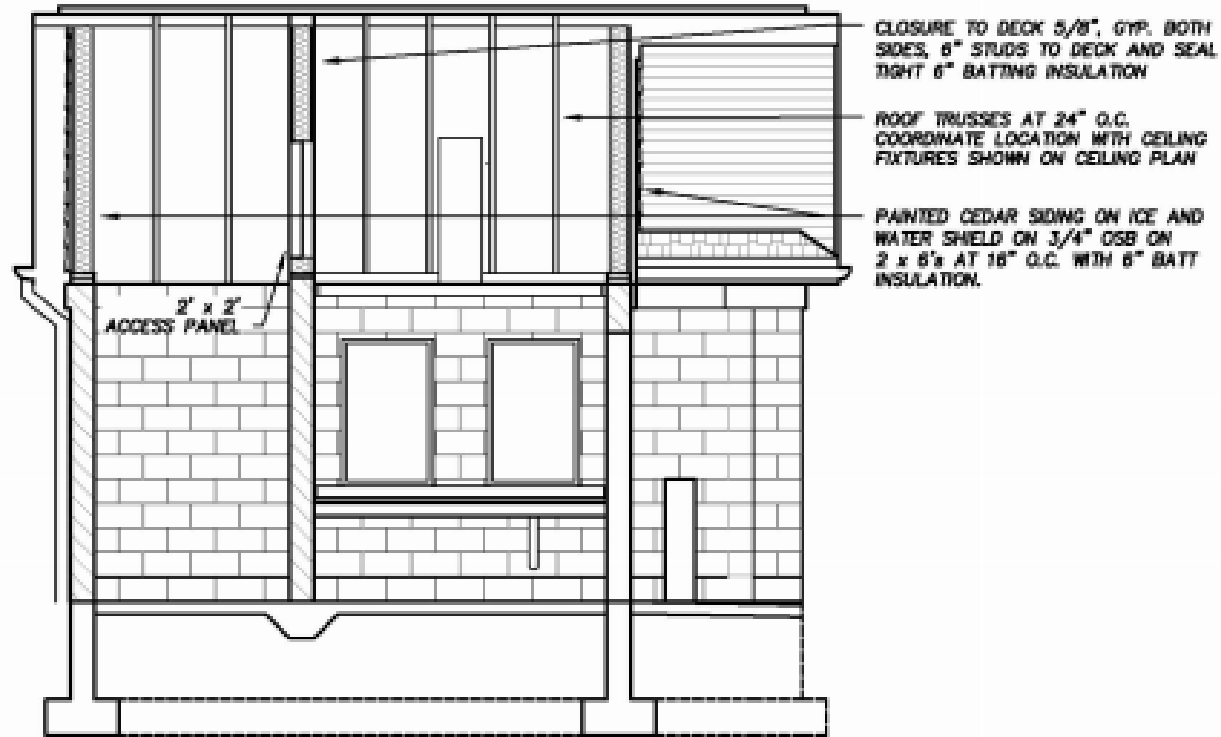
4 EAST ELEVATION
A-1 SCALE: 1/4"=1'-0" (SEE ELEVATION 1 FOR TYPICALS; SEE ALSO PLUMBING/ELECTRICAL FOR HOSE BID AND OUTDOOR RECEPTACLE LOCATIONS)

CAPITAL PROJ. NO.
CP4136

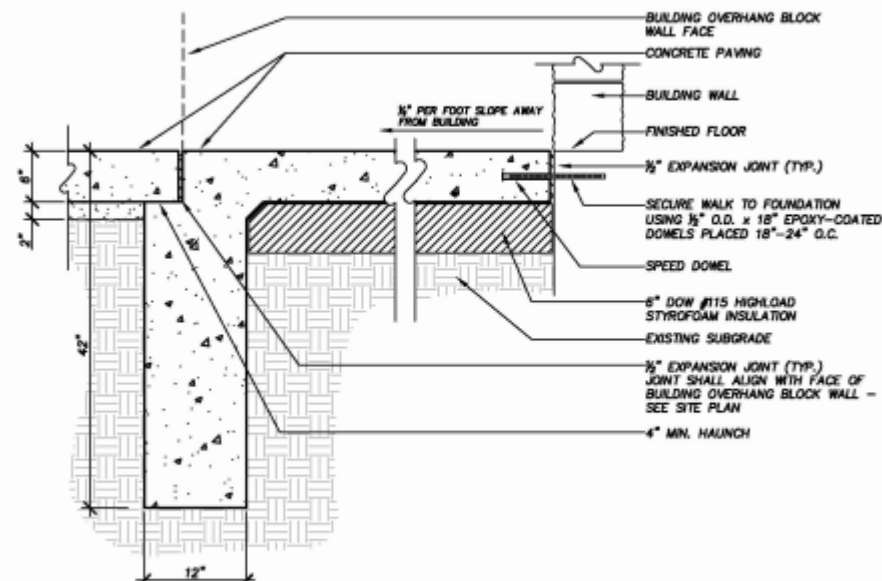
LEAD	KENNY
ARCH	KARORPAP
MECH	HOPPER
ELEC	BEACH
CIVIL	LEFEVRE
L.A.	KENNY
REP	COOL
APPR	LEFEVRE
DATE	5/20/15
SCALE	3/8"=1'-0"
REVISIONS	
RELEASED FOR BID	



1 WALL SECTION
 A-2 SCALE: 3/4"=1'-0"



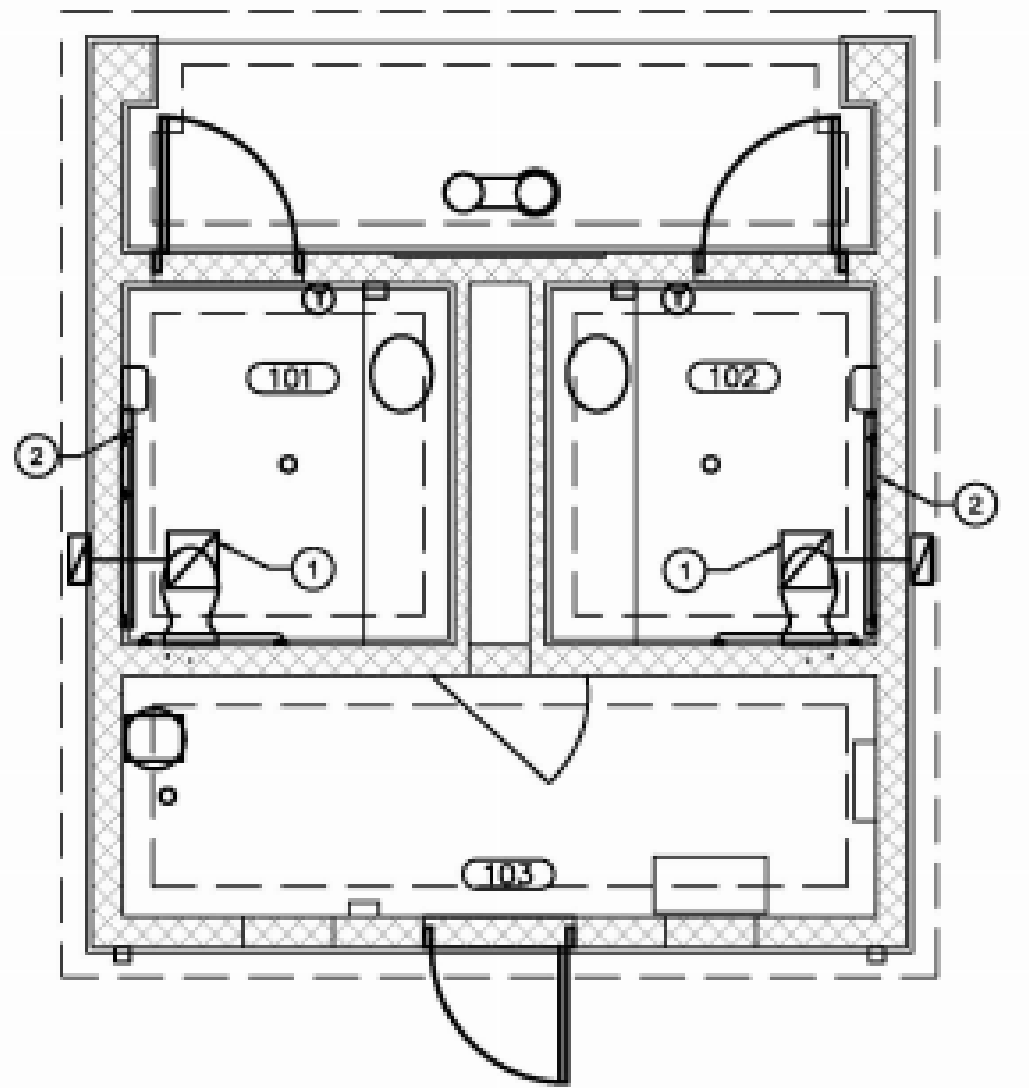
5 BUILDING SECTION
 A-1 SCALE: 1/4"=1'-0"



2 ENTRANCE STOOP WITH DOWELS
 A-2 SCALE: 1"=1'-0"

CAPITAL PROJ. NO. QH4138

LEAD	KENNY
ARCH.	KARORRNP
MECH.	HOPPER
ELEC.	BEACH
CIVIL	LEFEVRE
L.A.	KENNY
REP.	COOL
APPR.	LEFEVRE
DATE	8/10/15
SCALE	VARIED
REVISIONS	
RELEASED FOR BID	



MECHANICAL AND PLUMBING PLAN GENERAL NOTES:

1. ALL WORKMANSHIP AND MATERIALS SHALL COMPLY WITH MSU CONSTRUCTION STANDARDS.
2. CONTRACTOR SHALL SUBMIT FOR REVIEW AND APPROVAL SHOP DRAWINGS FOR ALL NEW EQUIPMENT BEING INSTALLED. UPON PROJECT COMPLETION, CONTRACTOR SHALL SUBMIT (1) COMPLETE SET OF AS-BUILT DRAWINGS ALONG WITH ANY OPERATION AND MAINTENANCE MANUALS FOR MSU RECORDS.
3. INSULATE PIPING AS OUTDOOR PIPING PER MSU SPECIFICATIONS.
4. FURNISH AND INSTALL A COMPLETE AND OPERATING SYSTEM. ALL ITEMS ARE NOT NECESSARILY SHOWN.
5. REFER TO MANUFACTURERS INSTALLATION INSTRUCTIONS FOR LOCATION OF CONNECTIONS UNLESS OTHERWISE NOTED.
6. COORDINATE WITH ELECTRICAL CONTRACTOR FOR POWER CONNECTION TO ALL PLUMBING AND MECHANICAL EQUIPMENT.
7. ALL INDIRECT DRAIN LINES SHALL BE ROUTED WITH OUT DIPS OR SAGS TO TERMINATE WITH AN AIR GAP INTO AN APPROVED INDIRECT WASTE RECEPTOR.
8. PROVIDE A DRAIN VALVE WITH COMPRESSED AIR QUICK CONNECTION IN LOCKABLE RECESSED WALL CABINETS IN LOW POINTS OF CW AND HW LINES.
9. DIRECT BURIED DOMESTIC WATER PIPING SHALL BE SOFT COPPER TUBE, TYPE K PER MSU STANDARDS OF CONSTRUCTION.

MECHANICAL PLAN NOTES:

- ① PROVIDE AND INSTALL NEW EXHAUST FAN EQUAL TO GREENHECK MODEL SP-A80 CEILING MOUNTED FAN TO EXHAUST 75 CFM AT 0.1" ESP. ELEC = 0.34 AMPS, 29.4 WATTS. DIMENSIONS = 13-1/4x10-5/8x8" HIGH. PROVIDE WITH SPEED CONTROLLER OPTIONAL ALUMINUM GRILLE AND MODEL EL 10x3 ELBOW DISCHARGE WITH BIRDSCREEN FOR INSTALLATION UNDER ROOF EAVES. TRANSITION FROM 8" FAN OUTLET TO 10x3 DISCHARGE ELBOW AS REQUIRED. ON/OFF CONTROLS TO BE TIED INTO OCCUPANCY SENSOR PROVIDED AND INSTALLED BY ELECTRICAL CONTRACTOR.
- ② PROVIDE AND INSTALL NEW BASEBOARD HEATER SHALL BE EQUAL TO BERKO OBD SERIES, HEAVY DUTY COMMERCIAL TYPE, MODEL OBD1250, 120V, 1250W, 4265 BTU/HR, 10.4 AMPS, 58 IN LENGTH, MOUNT BOTTOM 5" AFF. PROVIDE WITH REMOTE THERMOSTAT WITH TAMPER PROOF COVER AND ALL COMPONENTS REQUIRED FOR A COMPLETE SYSTEM. THERMOSTAT TO MODULATE ELECTRIC HEAT AS REQUIRED TO MAINTAIN A SETPOINT OF 70 DEGREES F (ADJUSTABLE).

MECHANICAL FIRST FLOOR PLAN

SCALE: 1/4" = 1'-0"

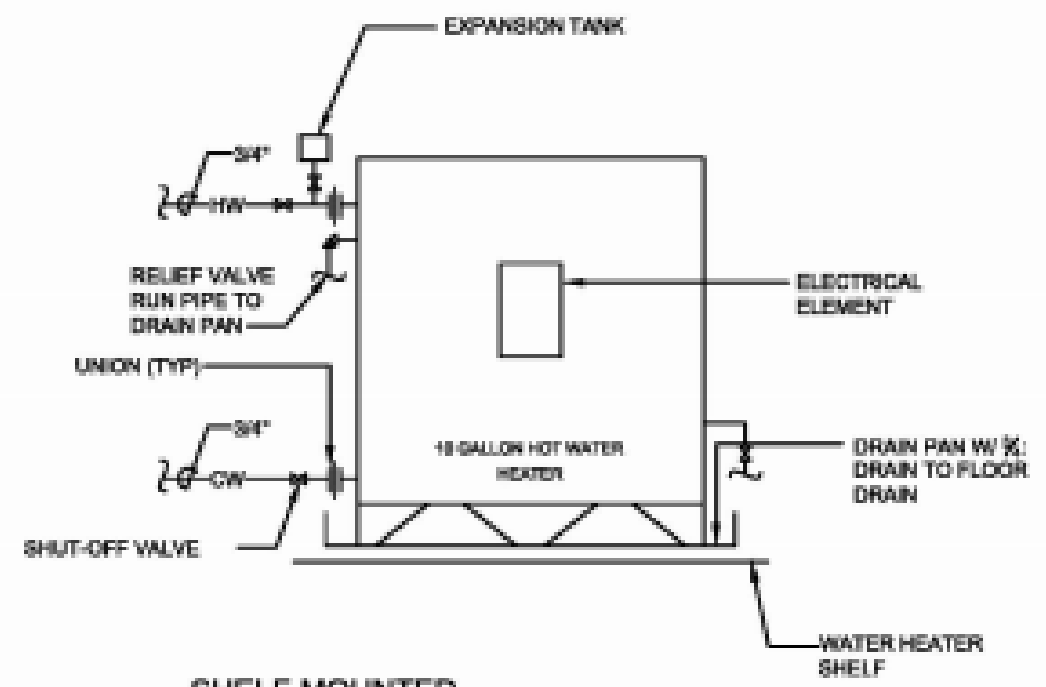


MECHANICAL SYMBOL & ABBREVIATION LEGEND

-----	COLD WATER	EF	EXHAUST FAN
-----	HOT WATER	EG	EXHAUST GRILLE
-----	VENT	FF	FINISHED FLOOR
-----	SANITARY	IE	INVERT ELEVATION
FD	FLOOR DRAIN	TYP.	TYPICAL
DF	DRINKING FOUNTAIN	N.T.S.	NOT TO SCALE
FCO	FLOOR CLEAN OUT	☐	RETURN OR EXHAUST GRILLE
CO	CLEAN OUT	W	WASTE
EW	ELECTRIC WATER HEATER	HB	HOSE BIBB
WCO	WALL CLEAN OUT	WH	WALL HYDRANT
AFF	ABOVE FINISH FLOOR	LAV	LAVATORY
		WC	WATER CLOSET

CAPITAL PROJ. NO.
0714136

LEAD	EMRY
ARCH	KASORANP
MECH	JORDAN
ELEC	BEACH
CIVIL	LEITCH
L.A.	EMRY
REP.	COOL
APPR.	LEITCH
DATE	EMRY
SCALE	VARIO
REVISIONS	
RELEASED FOR	BD

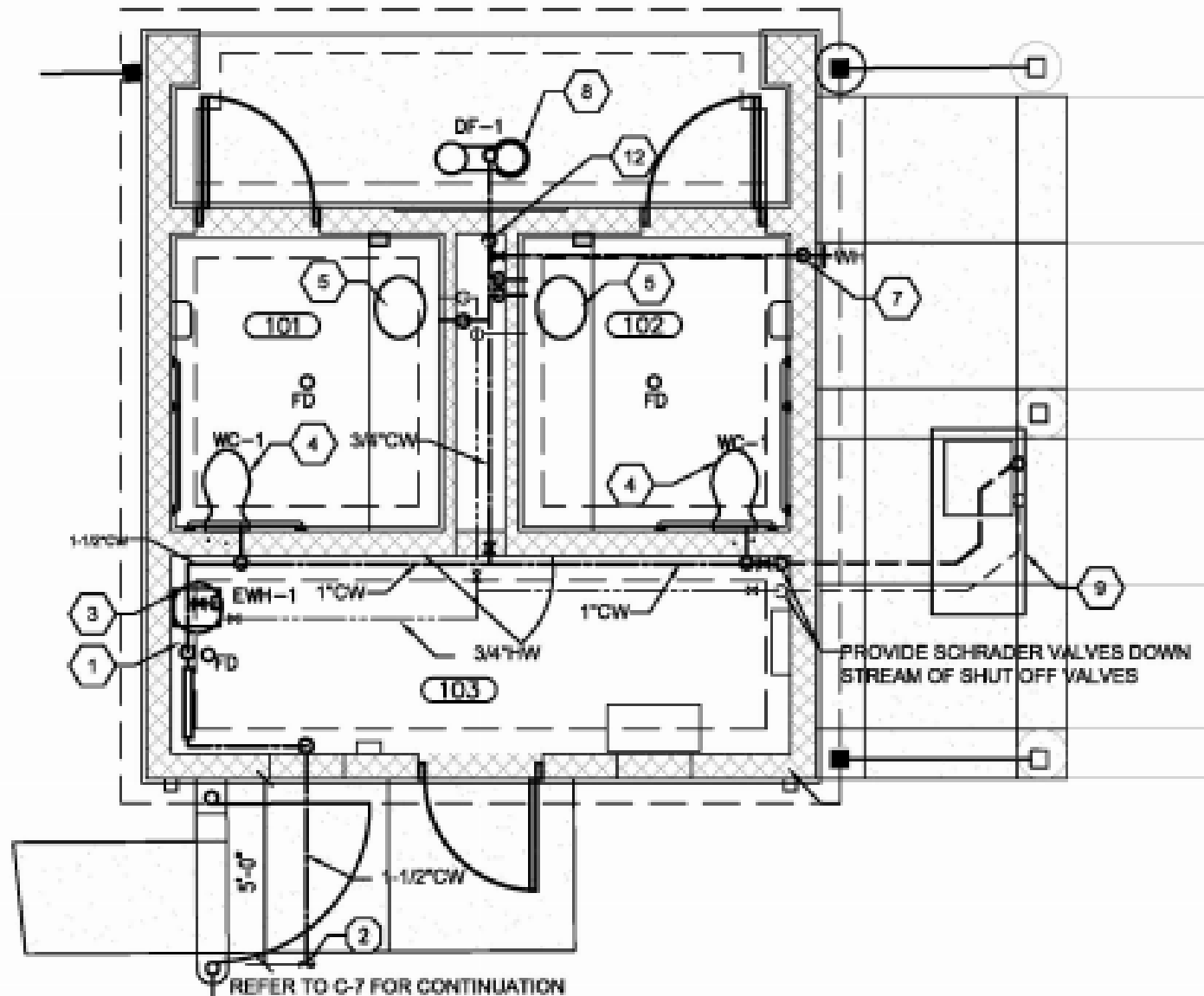


**SHELF MOUNTED
ELECTRIC WATER HEATER DETAIL**
NO SCALE

**CHILDREN'S GARDEN - RESTROOM
CONSTRUCT ORIGINAL BUILDING**

CAPITAL PROJ. NO.	
CP14130	
LEAD	KHNEY
ARCH	KASORRNP
MECH	HOPKIN
ELEC	BEACH
CIVIL	LOEWE
L.A.	KHNEY
REP	COOL
APPR	LOEWE
DATE	08/01/15
SCALE	VARIES
REVISIONS	
RELEASED FOR	NO

CAPITAL PROJ. NO.	CP14136
LEAD	EMERY
ARCH	KARZDORF
MECH	HODDICK
ELEC	BEACH
CIVIL	LEJEUNE
L.A.	EMERY
REP.	COOL
APPR.	LEJEUNE
DATE	5/20/15
SCALE	VARIOUS
REVISIONS	
RELEASED FOR	BD



PLUMBING NOTES:

- 1 NEW 1-1/2" WATER SERVICE - SEE DETAIL THIS SHEET.
- 2 PROVIDE AND INSTALL NEW WINTERIZATION BOX OUTSIDE THE RESTROOM. REFER TO SHEET C-7 AND THIS SHEET. COORDINATE LOCATION IN FIELD WITH MSU PROJECT REPRESENTATIVE.
- 3 ROUTE 3/4" CW TO NEW ELECTRIC WATER HEATER. SEE DETAIL THIS SHEET. NEW EWH-1 SHALL BE LOCHNIVAR JUNIOR WATER HEATER MODEL JRC010DS, 10 GAL CAPACITY, 1650 WATTS, 120V, OR EQUAL BY RHEEM. MOUNT HIGH ON MANUFACTURER PROVIDED SHELF. DIM = 18-1/4" HIGHx16"DIA.
- 4 ROUTE 1" CW DOWN IN CHASE & CONNECT TO WALL HUNG WATER CLOSET. ROUTE 1-1/2" VENT UP AND 3" SAN. DOWN. WATER CLOSET SHALL BE EQUAL TO KOHLER KINGSTON K-4326, FLUSH VALVE SHALL BE SLOAN SOLIS 8111-1.28.
- 5 ROUTE 1/2" CW/HW DOWN TO NEW LAVATORY FAUCET & CONNECT. ROUTE 1-1/2" VENT UP IN CHASE AND 2" SAN. DOWN. FAUCET SHALL BE EQUAL TO SLOAN OPTIMA SOLIS EAF-275-ISM. PROVIDE PERFORATED STRAINER FOR LAV.
- 6 NEW 2" FLOOR DRAIN. PROVIDE FLOOR DRAIN WITH SURE SEAL INLINE FLOOR DRAIN TRAP SEALER. PER MSU STANDARDS OF CONSTRUCTION.
- 7 ROUTE 3/4" CW DOWN IN WALL TO WALL HYDRANT EQUAL TO WADE 8801, 175 NON FREEZE, CONCEALED WITH INTEGRAL VACUUM BREAKER AND GARDEN HOSE THREAD, LOOSE KEY TYPE.
- 8 ROUTE 3/4" CW TO NEW DRINKING FOUNTAIN (DF-1) AND CONNECT. ROUTE 2" SANITARY FROM DRINKING FOUNTAIN AND CONNECT. DRINKING FOUNTAIN SHALL BE EQUAL TO ELKAY MODEL LK4420SFRK, 8" LEVEL TUBULAR PEDESTAL, SANITARY FREEZE RESISTANT, BARRIER FREE MODEL. COLOR TO BE DETERMINED BY ARCHITECT.
- 9 ROUTE 3/4" CW, 3/4" HW AND 2" SAN BELOW GRADE BELOW FREEZE LEVEL (42" BELOW GRADE) AND CONNECT TO FAUCET/SINK AT CREATION STATION (SINK AND FAUCET SHOWN ON SITE PLAN SHEET C-4). PROVIDE AND INSTALL FIXTURE AIR ADMITTANCE VALVE, UV INHIBITED AND RATED FOR OUTDOOR USE. INSTALL CLEANOUT ON SANITARY ONCE ABOVE GRADE.
- 10 3" VTR
- 11 1-1/2" VENT UP
- 12 1/2" CW DOWN TO 42" BELOW FF. PROVIDE SHUT OFF VALVE IN CHASE AND SCHRADER VALVE DOWNSTREAM OF SHUTOFF VALVE.

PLUMBING PLAN

SCALE: 1/4" = 1'-0"

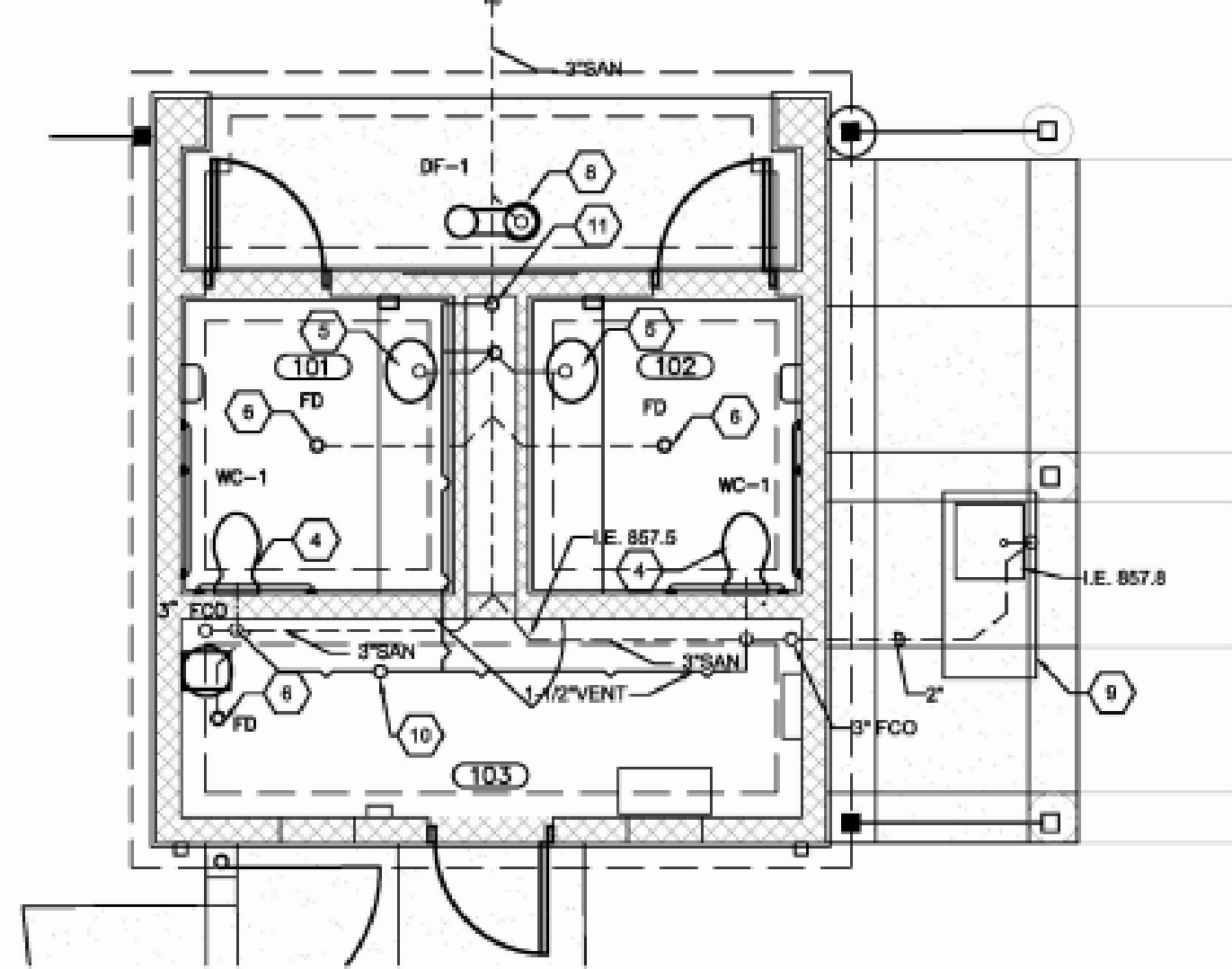


MECHANICAL SYMBOL & ABBREVIATION LEGEND

-----	COLD WATER	EF	EXHAUST FAN
-----	HOT WATER	EG	EXHAUST GRILLE
---v---	VENT	FF	FINISHED FLOOR
-----SAN-----	SANITARY	IE	INVERT ELEVATION
FD	FLOOR DRAIN	TYP.	TYPICAL
DF	DRINKING FOUNTAIN	N.T.S.	NOT TO SCALE
FCO	FLOOR CLEAN OUT	▧	RETURN OR EXHAUST GRILLE
CO	CLEAN OUT	W	WASTE
EWH	ELECTRIC WATER HEATER	HB	HOSE BIBB
WCO	WALL CLEAN OUT	WH	WALL HYDRANT
AFF	ABOVE FINISH FLOOR	LAV	LAVATORY
		WC	WATER CLOSET

CAPITAL PROJ. NO. CP14130	
LEAD	KINNEY
ARCH.	KARSKAMP
MECH.	HOPPER
ELEC.	SEACH
CIVIL	LEFVRE
L.A.	KINNEY
REP.	COOL
APPR.	LEFVRE
DATE	8/16/15
SCALE	VARIOUS
REVISIONS	
RELEASED FOR BID	

REFER TO C-7 FOR CONTINUATION



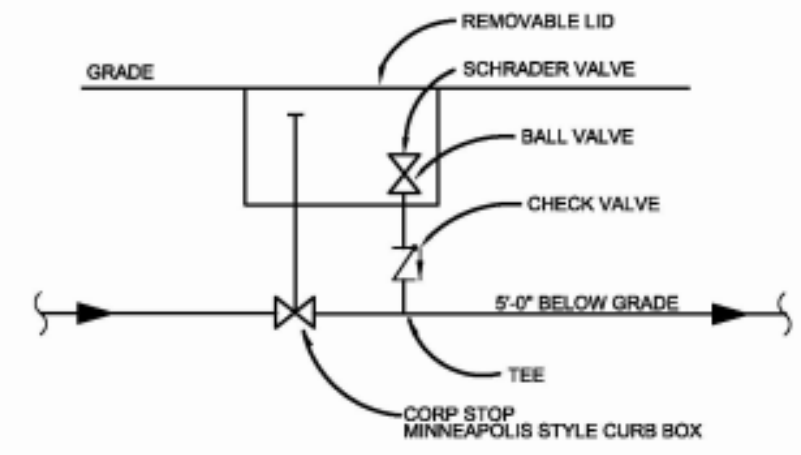
SANITARY AND VENT PLUMBING PLAN
SCALE: 1/4" = 1'-0"

PLUMBING NOTES:

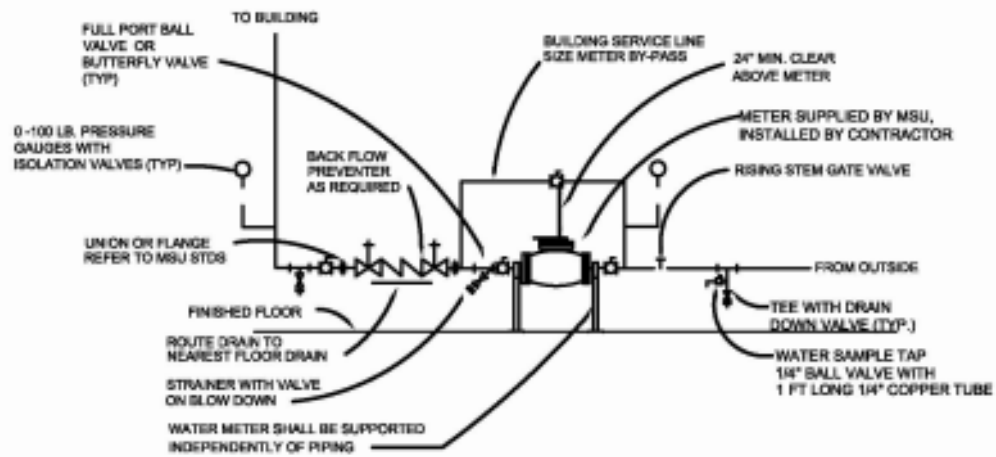
- 1 NEW 1-1/2" WATER SERVICE - SEE DETAIL THIS SHEET.
- 2 PROVIDE AND INSTALL NEW WINTERIZATION BOX OUTSIDE THE RESTROOM. REFER TO SHEET C-7 AND THIS SHEET. COORDINATE LOCATION IN FIELD WITH MSU PROJECT REPRESENTATIVE.
- 3 ROUTE 3/4" CW TO NEW ELECTRIC WATER HEATER. SEE DETAIL THIS SHEET. NEW EWH-1 SHALL BE LOCHNIVAR JUNIOR WATER HEATER MODEL JRC010DS, 10 GAL CAPACITY, 1650 WATTS, 120V, OR EQUAL BY RHEEM. MOUNT HIGH ON MANUFACTURER PROVIDED SHELF. DIM = 18-1/4" HIGHx16"DIA.
- 4 ROUTE 1" CW DOWN IN CHASE & CONNECT TO WALL HUNG WATER CLOSET. ROUTE 1-1/2" VENT UP AND 3" SAN. DOWN. WATER CLOSET SHALL BE EQUAL TO KOHLER KINGSTON K-4325, FLUSH VALVE SHALL BE SLOAN SOLIS 8111-1.28.
- 5 ROUTE 1/2" CW/HW DOWN TO NEW LAVATORY FAUCET & CONNECT. ROUTE 1-1/2" VENT UP IN CHASE AND 2" SAN. DOWN. FAUCET SHALL BE EQUAL TO SLOAN OPTIMA SOLIS EAF-275.-ISM. PROVIDE PERFORATED STRAINER FOR LAV.
- 6 NEW 2" FLOOR DRAIN. PROVIDE FLOOR DRAIN WITH SURE SEAL INLINE FLOOR DRAIN TRAP SEALER. PER MSU STANDARDS OF CONSTRUCTION.
- 7 ROUTE 3/4" CW DOWN IN WALL TO WALL HYDRANT EQUAL TO WADE 8801, 175 NON FREEZE, CONCEALED WITH INTEGRAL VACUUM BREAKER AND GARDEN HOSE THREAD, LOOSE KEY TYPE.
- 8 ROUTE 3/4" CW TO NEW DRINKING FOUNTAIN (DF-1) AND CONNECT. ROUTE 2" SANITARY FROM DRINKING FOUNTAIN AND CONNECT. DRINKING FOUNTAIN SHALL BE EQUAL TO ELKAY MODEL LK4420SFRK, 8H-LEVEL, TUBULAR PEDESTAL, SANITARY FREEZE RESISTANT, BARRIER FREE MODEL. COLOR TO BE DETERMINED BY ARCHITECT.
- 9 ROUTE 3/4" CW, 3/4" HW AND 2" SAN BELOW GRADE BELOW FREEZE LEVEL (42" BELOW GRADE) AND CONNECT TO FAUCET/SINK AT CREATION STATION (SINK AND FAUCET SHOWN ON SITE PLAN SHEET C-4). PROVIDE AND INSTALL FIXTURE AIR ADMITTANCE VALVE, UV INHIBITED AND RATED FOR OUTDOOR USE. INSTALL CLEANOUT ON SANITARY ONCE ABOVE GRADE.
- 10 3"VTR
- 11 1-1/2" VENT UP
- 12 1/2" CW DOWN TO 42" BELOW FF. PROVIDE SHUT OFF VALVE IN CHASE AND SCHRADER VALVE DOWNSTREAM OF SHUTOFF VALVE.

NOTE:

1. SIZE VALVE TO MATCH LINE SIZE.
2. FIELD VERIFY LOCATION WITH MSU PROJECT REPRESENTATIVE.



WINTERIZATION BOX PIPING DETAIL
NO SCALE



WATER SERVICE PIPING DIAGRAM

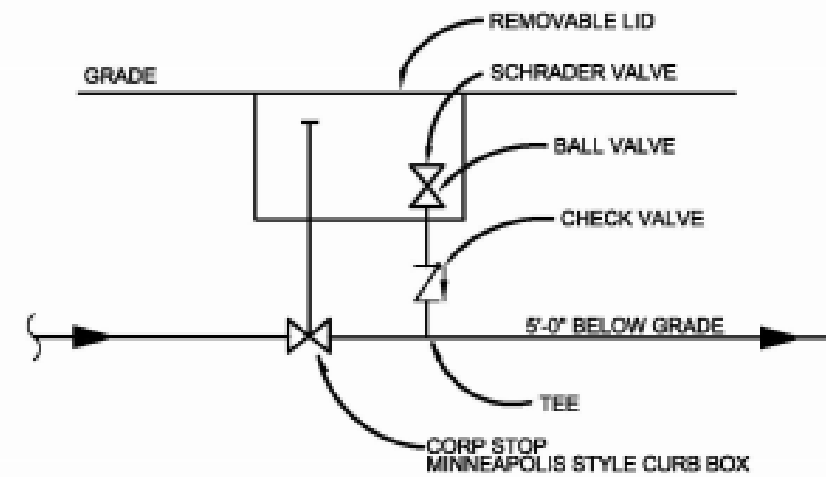
NO SCALE

NOTES:

- 1. DRAIN DOWN VALVES SHALL BE 2" FOR MAINS GREATER THAN 2". ALL MAINS THAT ARE 2" OR LESS SHALL HAVE FULL LINE SIZE BLOW DOWN VALVES

NOTE:

- 1. SIZE VALVE TO MATCH LINE SIZE.
- 2. FIELD VERIFY LOCATION WITH MSU PROJECT REPRESENTATIVE.

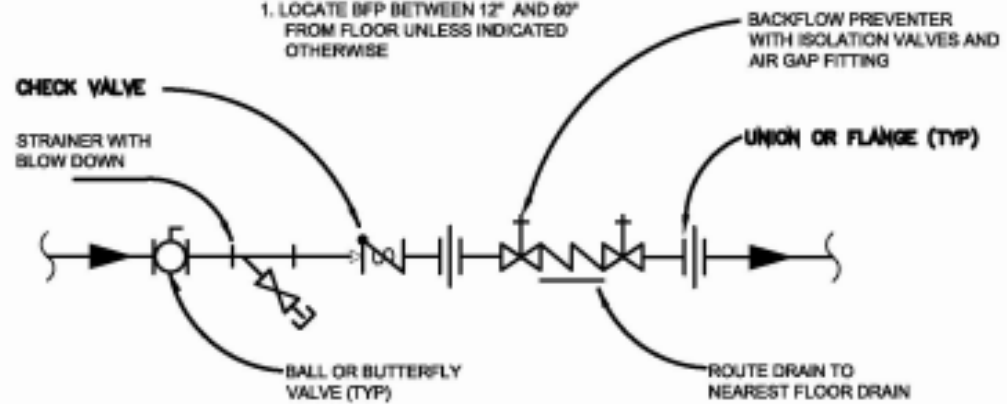


WINTERIZATION BOX PIPING DETAIL

NO SCALE

NOTES:

- 1. LOCATE BFP BETWEEN 12" AND 60" FROM FLOOR UNLESS INDICATED OTHERWISE



BACKFLOW PREVENTER PIPING DIAGRAM

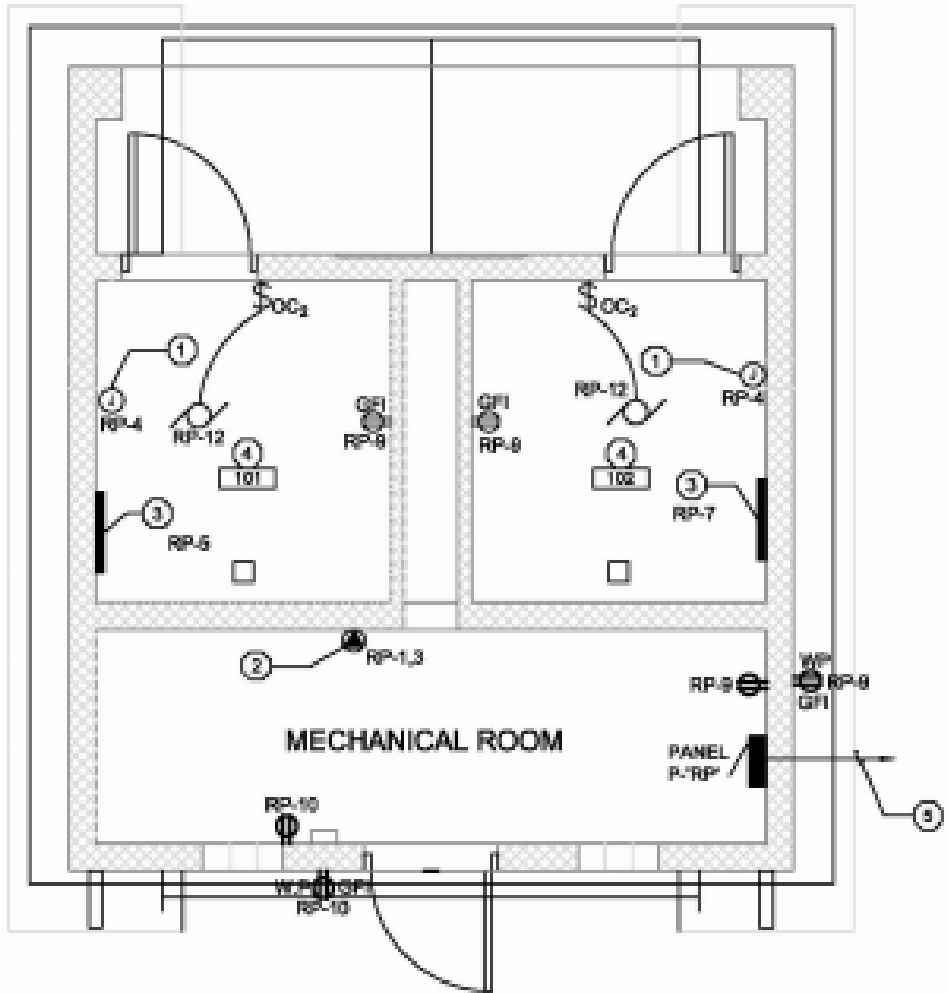
NO SCALE

CAPITAL PROJ. NO.	CP4130
LEAD	KENNY
ARCH.	KASORRNP
MECH.	JONES
ELEC.	BEACH
CIVIL	LEWIS
L.A.	KENNY
REP.	COOL
APPR.	LEWIS
DATE	8/20/15
SCALE	VARIOUS
REVISIONS	
RELEASED FOR R/D	

**CHILDREN'S GARDEN - RESTROOM
CONSTRUCT ORIGINAL BUILDING**

CAPITAL PROJ. NO.
CP14138

LEAD	KRNEY
ARCH	KARDOFFER
MECH	HOPKIN
ELEC	BEACH
CIVIL	LEFEVRE
L.A.	KRNEY
REP.	COOL
APPR.	LEFEVRE
DATE	8/19/15
SCALE	VARIES
REVISIONS	
RELEASED FOR BID	

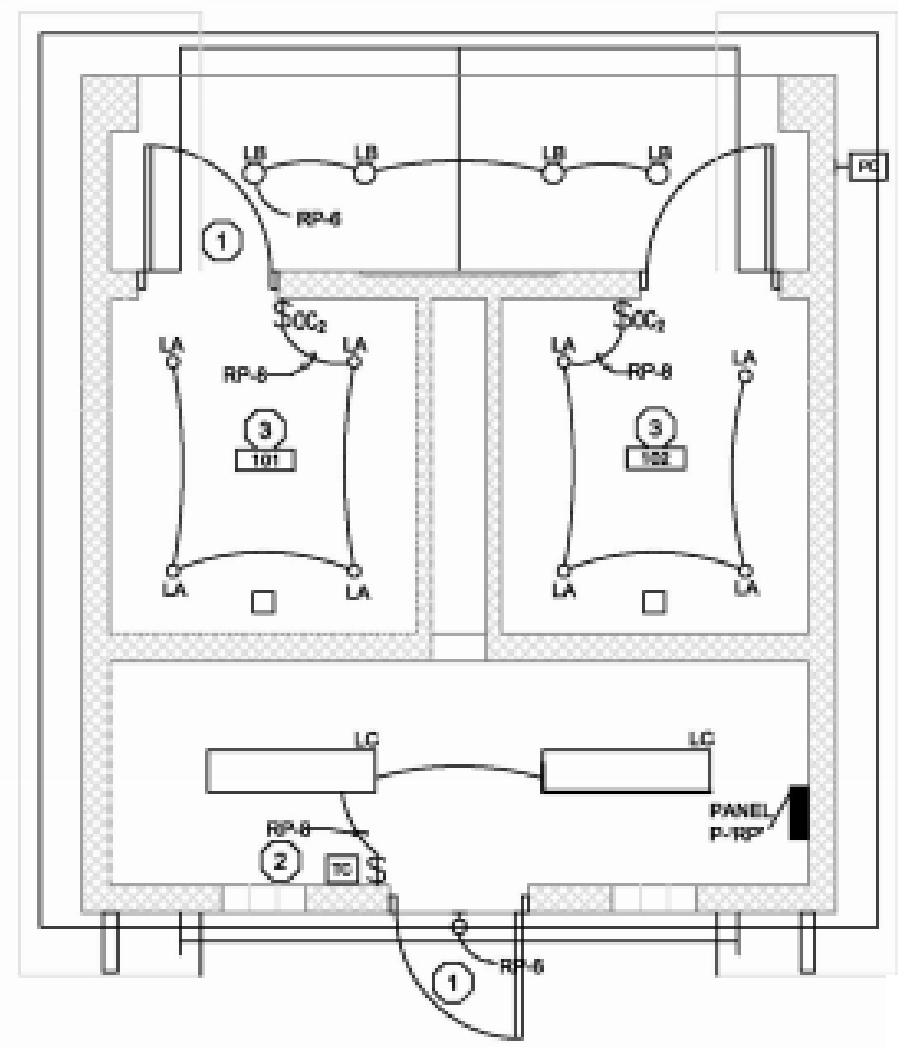


- ELECTRICAL POWER PLAN NOTES:
- ① ELECTRICAL HAND DRYERS SHALL BE SUPPLIED AND INSTALLED BY THE ELECTRICAL CONTRACTOR. DRYERS SHALL BE AN EXCEL "XLERATOR" SERIES; MODEL # XL-SB-1.1N-H-120V.
 - ② ELECTRIC WATER HEATER IS SUPPLIED AND INSTALLED BY THE MECHANICAL TRADES AND WIRED BY THE ELECTRICAL CONTRACTOR. E.C. TO FIELD COORDINATE FINAL TANK LOCATION PRIOR TO ROUTING OF FEEDER.
 - ③ ELECTRIC BASEBOARD HEATER IS SUPPLIED AND INSTALLED BY THE MECHANICAL TRADES AND WIRED BY THE ELECTRICAL CONTRACTOR. E.C. TO FIELD COORDINATE FINAL TANK LOCATION PRIOR TO ROUTING OF FEEDER.
 - ④ EXHAUST FANS ARE TO BE CONTROLLED BY A WALL-MOUNTED 2-POLE OCCUPANCY SENSOR SWITCH THAT WILL CONTROL BOTH THE EXHAUST FAN AND THE RESTROOM LIGHTS.
 - ⑤ ELECTRICAL CONTRACTOR TO ROUTE PANEL "P-RP" FEEDER CONDUIT 36" BELOW GRADE BETWEEN THE NEW RESTROOM AND THE ADJACENT CHILDREN'S GARDEN SHED. ELECTRICAL CONTRACTOR TO FIELD COORDINATE FINAL ROUTE WITH PROJECT REPRESENTATIVE PRIOR TO INSTALLATION.

POWER PLAN
SCALE: 1/4" = 1'-0"



CAPITAL PROJ. NO.	CP14138
LEAD	KRBEY
ARCH.	KAROSKAMP
MECH.	HODSON
ELEC.	BEACH
CIVIL	LEFEVRE
L.A.	KRBEY
REP.	COOL
APPR.	LEFEVRE
DATE	8/20/15
SCALE	VARIOUS
REVISIONS	
RELEASED FOR BID	



ELECTRICAL LIGHTING PLAN NOTES:

- ① ALL EXTERIOR LIGHT FIXTURES SHALL BE CONTROLLED VIA PHOTO-CELL 'ON' AND TIME CLOCK 'OFF' OPERATION.
- ② ELECTRICAL CONTRACTOR TO SUPPLY AND INSTALL A 'TORK' 7 DAY, ASTRONOMIC LIGHTING CONTROL TIME SWITCH; MODEL # DGLC200A-NC TO PROVIDE "TIME-OF-DAY" OFF CONTROL OF ALL EXTERIOR LIGHTS. FIELD COORDINATE WITH OWNER FOR "OFF" SCHEDULING PRIOR TO PROGRAMMING.
- ③ ELECTRICAL CONTRACTOR TO SUPPLY AND INSTALL A 2-POLE, DUAL RELAY / TECHNOLOGY WALL SWITCH OCCUPANCY SENSOR TO PROVIDE ROOM CONTROL OF BOTH THE LIGHTS AND THE EXHAUST FAN. WALL SWITCH SENSOR SHALL BE A WATTSTOPPER 'DSW-302' OR APPROVED EQUAL BY SENSOR SWITCH OR HUBMILL.
- ④ ELECTRICAL CONTRACTOR TO SUPPLY AND INSTALL A PHOTO-CELL TO THE UNDERSIDE OF THE EAVE TO PROVIDE DAILY LIGHTING CONTROL 'ON' FUNCTIONALITY. PHOTO-CELL SHALL BE A 'TORK' MODEL 'EPC-A' AND PROVIDED WITH THE TIME CLOCK.

LIGHTING PLAN

SCALE: 1/4" = 1'-0"

LIGHT FIXTURE SCHEDULE

Fixture Type	QTY.	Description	Voltage	Lamp	Lens	Distribution	Manufacturer/Model	Remarks
LA	8	1.75" RECESSED 'LED' DOWNLIGHT FIXTURE	120V	400 LU 3000° K LED	N/A	47"	LIGHTOLIER: CALCULITE 1.75 - C2L04 SER ES Cat# C2L04-DLFT-30K-47-R-UZ10V/C2L-DL-CCD-FT/C2LMP-CA2FMR	Gyp ceiling flush mount, Comfort Clear Diffuse reflector
LB	4	3" RECESSED STAINLESS STEEL 'LED' ROTATABLE DOWNLIGHT FIXTURE	120V	500 LU 3000° K LED	Clear Glass	35"	CON-TECH: 3" ELV DOWNLIGHT SERIES Cat# LVR316E-CTR324-ST (Stainless Steel) MR16 LED Lamp: G.E.# LED7XDMR16D83035 - Order Code: 69950	Electronic low voltage fixture to be provided with a G.E. MR16 LED lamp. Fixture adjustability: 87° Vert x 359°
LC	2	1'-0" x 4'-0" CHAIN SUSPENDED 'LED' INDUSTRIAL STYLE FIXTURE	120V	1,100 LU 4000° K LED	N/A	160° LED LAMP	LITHONIA "L" SERIES Cat# L-1-32-MVOLT-GE10IS-GLR-PLF-PAF LED Lamp: Philips# 434886-9290002882-16-5t8/48-4000 if 10/1	Fixture provided w/ HIGH LUMEN Instant Start linear LED lamp compatible ballast. Philips Advance model IOPA-
LD	1	WALL-MOUNTED LED 'WALL-PACK' FIXTURE	120V	1270 LU 4000°K LED	N/A	FLOOD	LITHONIA: 'OLWX1' SERIES Cat# OWLX1-13W-40K-MVOLT	Fixture to be mounted at 14'-0" A.F.G.

Notes:
 1. All fixtures to be considered as 'equal' shall be submitted for review approval. Type 'LB' & 'LD' fixtures shall be controlled via Photo-cell "On" and Time Clock "Off".
 2. Fixture counts are for reference only, E.C. shall confirm quantities w/ LTG plan. All fixtures are to be supplied and installed by the Electrical Contractor.
 3. E.C. to provide (6) MR16 LED lamps, and (2) TB-LED lamps as spare to the owner. All recessed mounted fixtures shall be supported independently from the ceiling system.
 4. E.C. to field coordinate with owner prior to final aiming of soffit light fixtures